



# Supercomputing is the beating heart of Highlander

1.

To increase the forecast from 15 to 30 days and increase the resolution to 2.2 km, **6 million hours of HPC** calculations were used

2.

New climate projections will be **much more accurate** thanks to HPC

3.

An additional **8 million hours of supercomputing** will be needed to realise projections up to 2050

*The terms supercomputing and HPC are synonymous.*

1.

Extension of climate forecasting capacity to 30 days

15 dd

3.

Calculated climate projection up to 2050

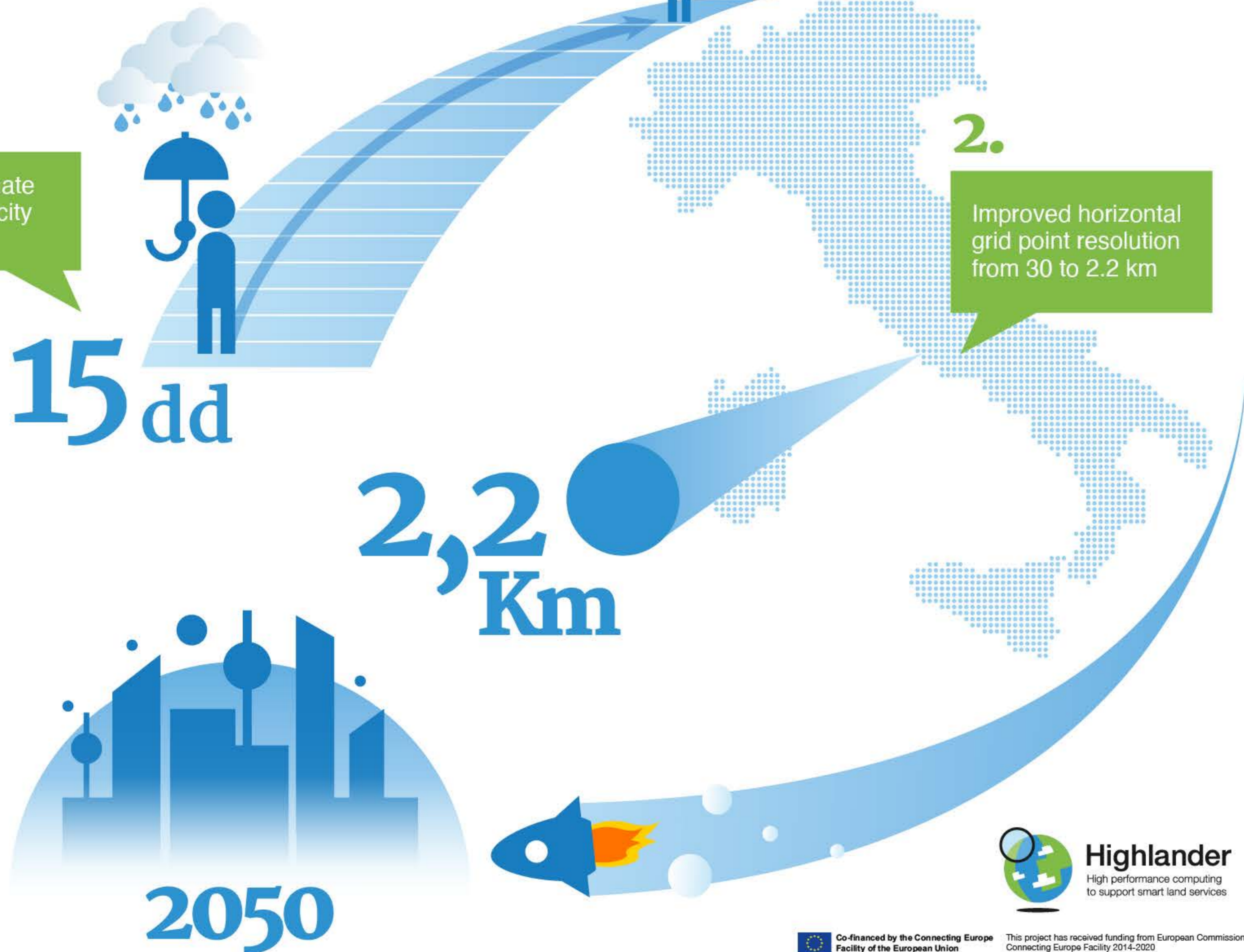
2050

2,2 Km

2.

Improved horizontal grid point resolution from 30 to 2.2 km

30 dd



**Highlander**  
High performance computing  
to support smart land services